

N A
S H

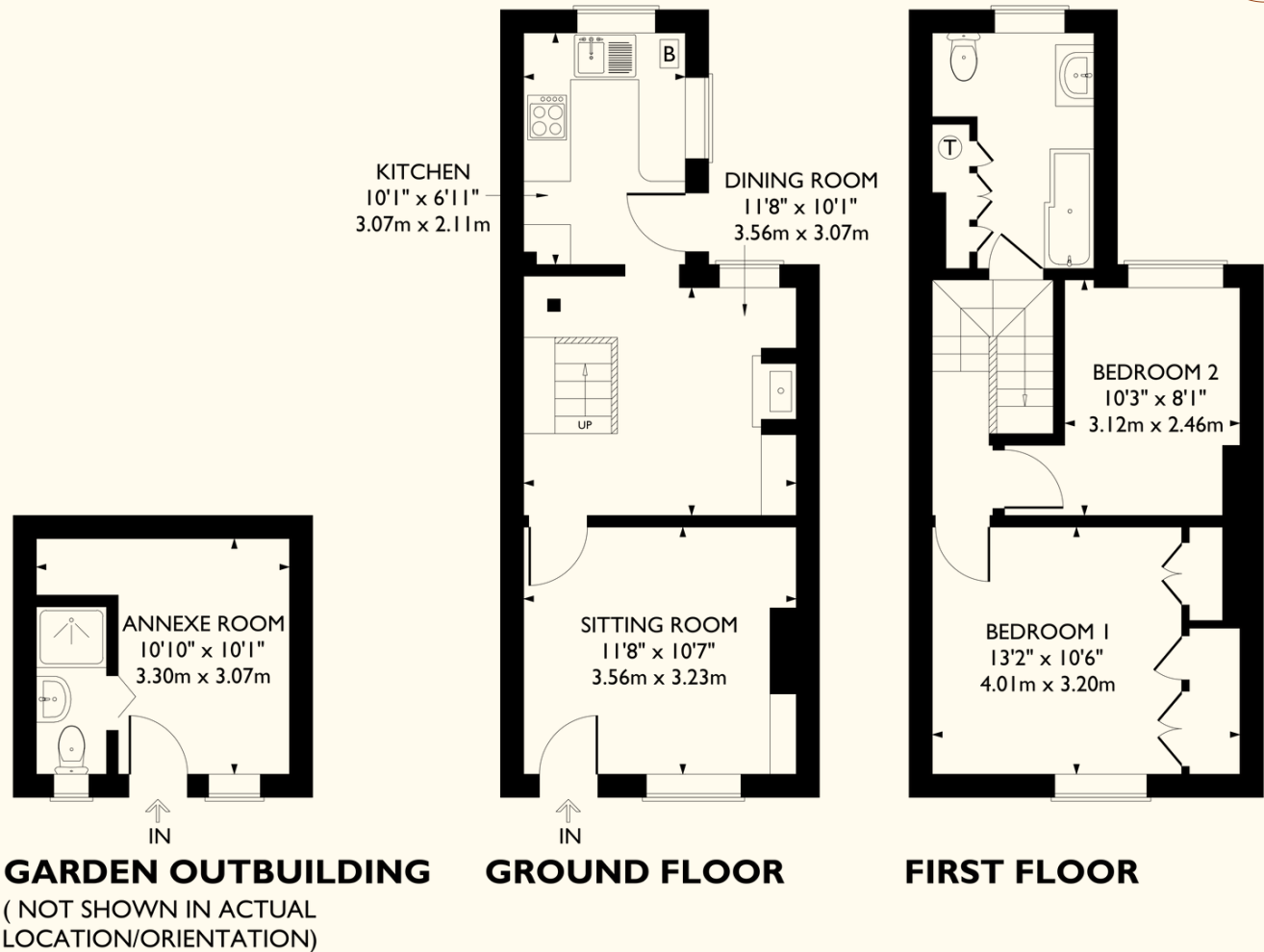
Ellesmere Road

Berkhamsted

Approximate Gross Internal Area
668 sq ft / 62 sq m

Outbuilding
109 sq ft / 10 sq m

Total
777 sq ft / 72 sq m



© Nash Partnership

This plan is for layout guidance only. Drawn in accordance with RICS guidelines. Not drawn to scale unless stated. Windows & door openings are approximate. Whilst every care is taken in the preparation of this plan, please check all dimensions, shapes & compass bearings before making any decisions reliant upon them.