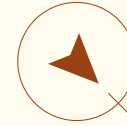
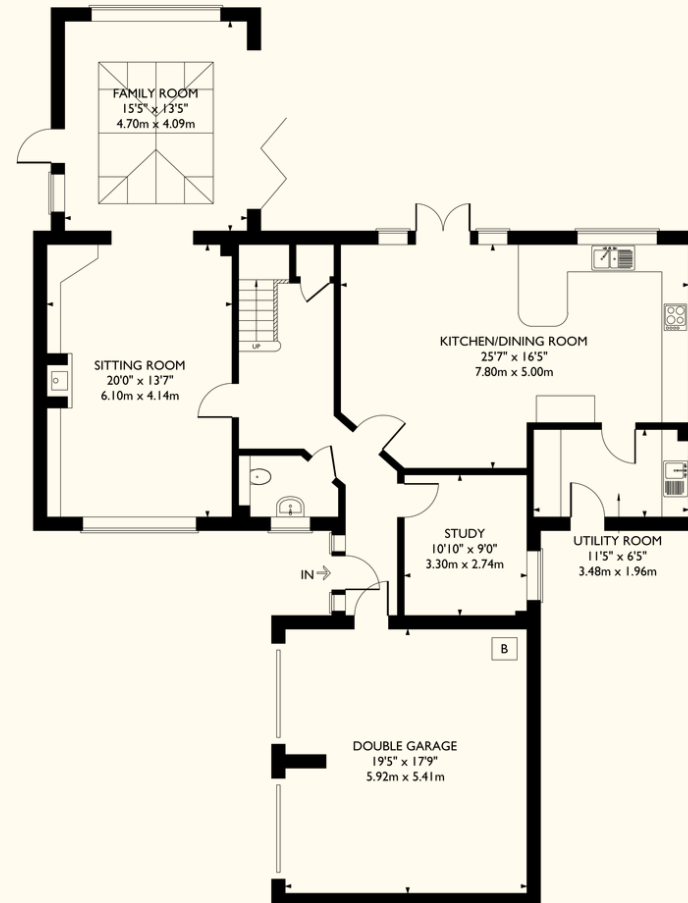


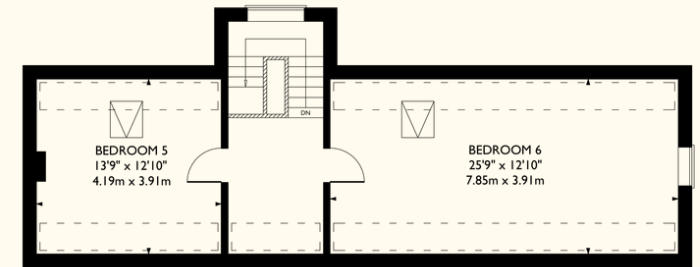
NASH



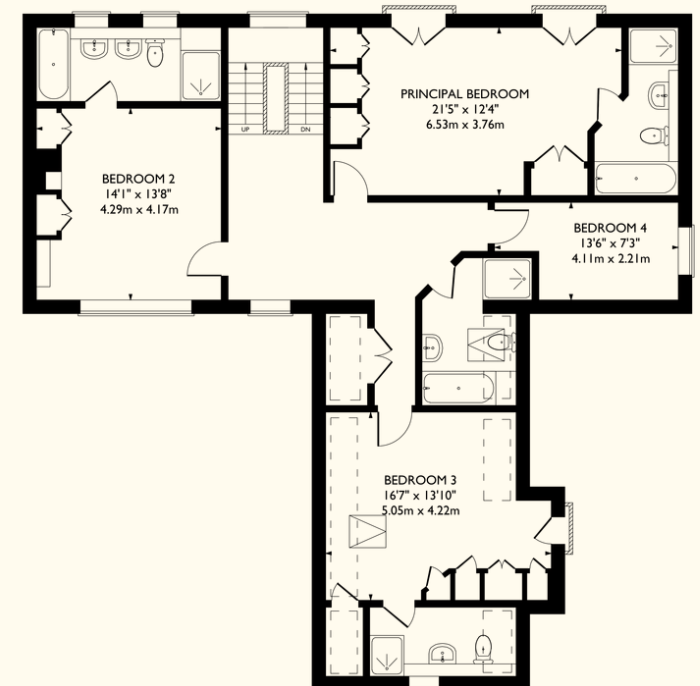
[] = RESTRICTED HEAD HEIGHT (< 5 FT)



GROUND FLOOR



SECOND FLOOR



FIRST FLOOR

The Long Barn

Northall

Approximate Gross Internal Area
3,252 sq ft / 302 sq m

Garage
345 sq ft / 32 sq m

Total
3,597 sq ft / 334 sq m

© Nash Partnership

This plan is for layout guidance only. Drawn in accordance with RICS guidelines. Not drawn to scale unless stated. Windows & door openings are approximate. Whilst every care is taken in the preparation of this plan, please check all dimensions, shapes & compass bearings before making any decisions reliant upon them.