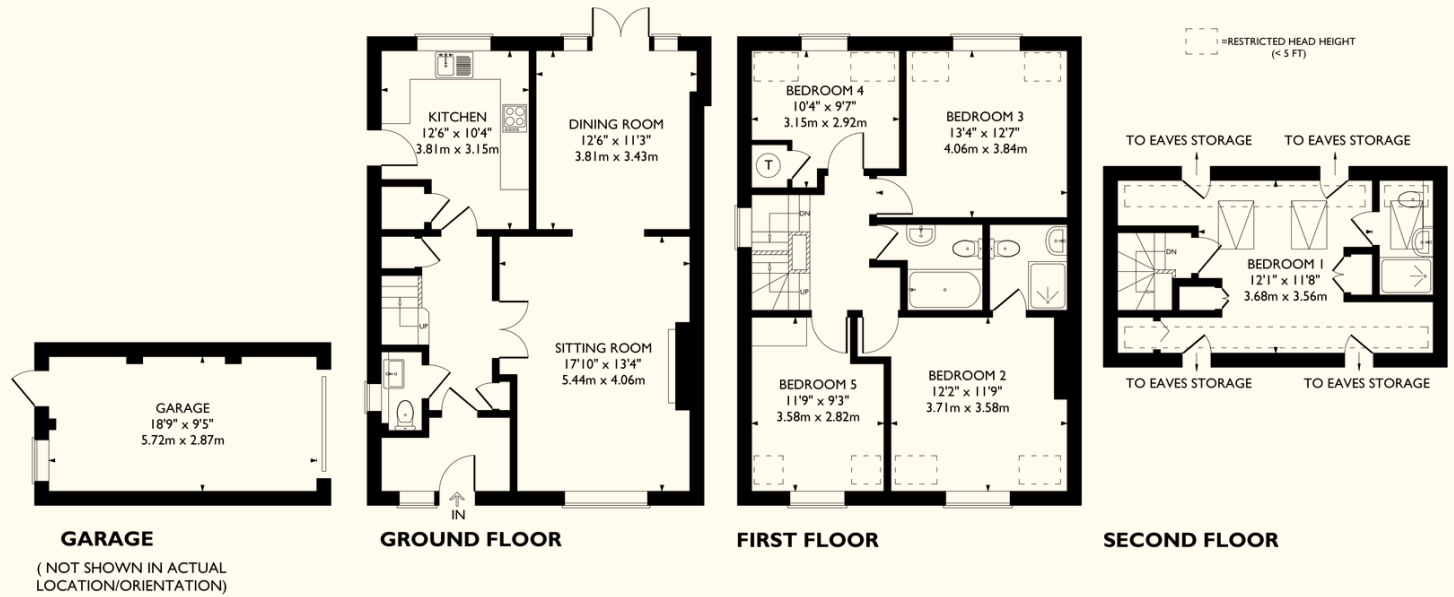




## Station Road

Long Marston



Approximate Gross Internal Area  
1,581 sq ft / 147 sq m

Garage  
177 sq ft / 16 sq m

Total  
1,758 sq ft / 163 sq m

© Nash Partnership

This plan is for layout guidance only. Drawn in accordance with RICS guidelines. Not drawn to scale unless stated. Windows & door openings are approximate. Whilst every care is taken in the preparation of this plan, please check all dimensions, shapes & compass bearings before making any decisions reliant upon them.