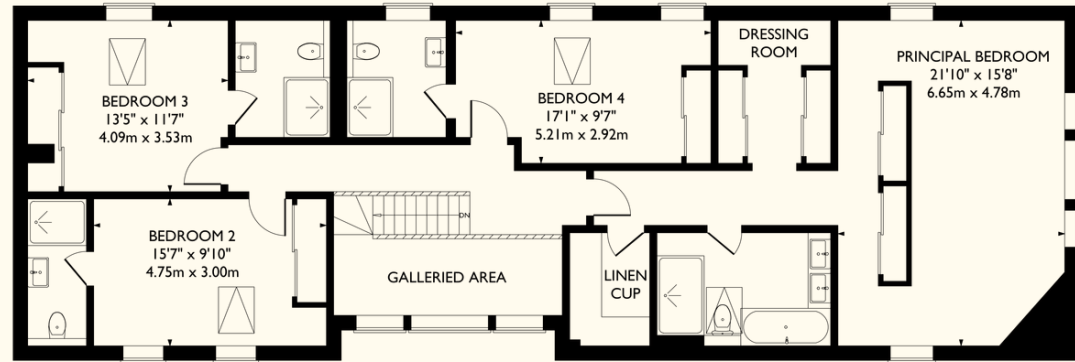
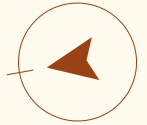
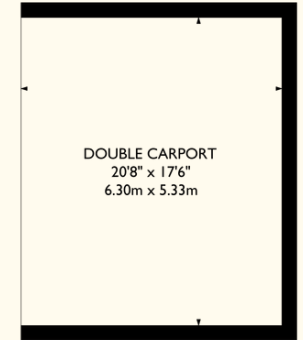


N A
S H

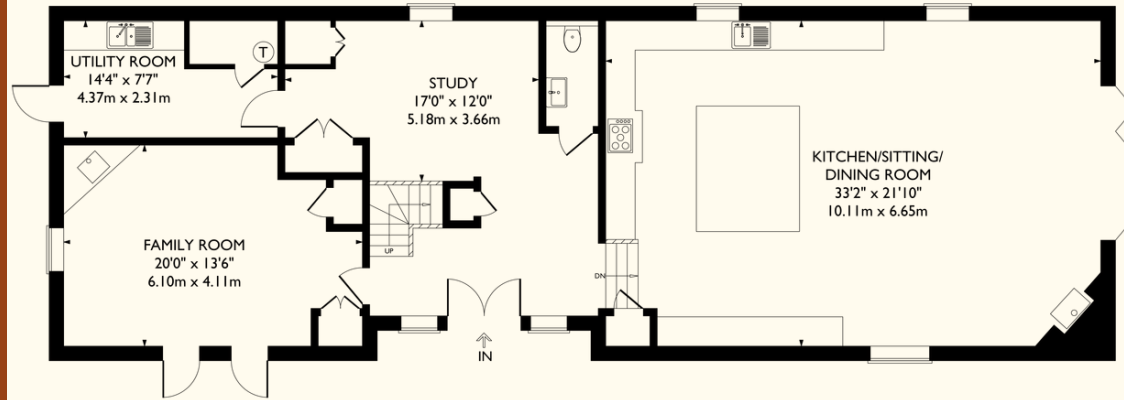


FIRST FLOOR

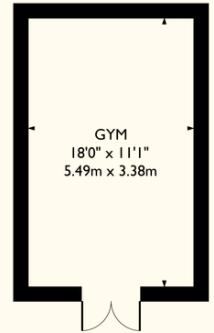


DOUBLE CARPORT

(NOT SHOWN IN ACTUAL LOCATION/ORIENTATION)



GROUND FLOOR



GYM

(NOT SHOWN IN ACTUAL LOCATION/ORIENTATION)

Ivy House Lane

Berkhamsted

Approximate Gross Internal Area
2,881 sq ft / 268 sq m

Gym
199 sq ft / 18 sq m

Total (Excluding Carport)
3,080 sq ft / 286 sq m

© Nash Partnership

This plan is for layout guidance only. Drawn in accordance with RICS guidelines. Not drawn to scale unless stated. Windows & door openings are approximate. Whilst every care is taken in the preparation of this plan, please check all dimensions, shapes & compass bearings before making any decisions reliant upon them.