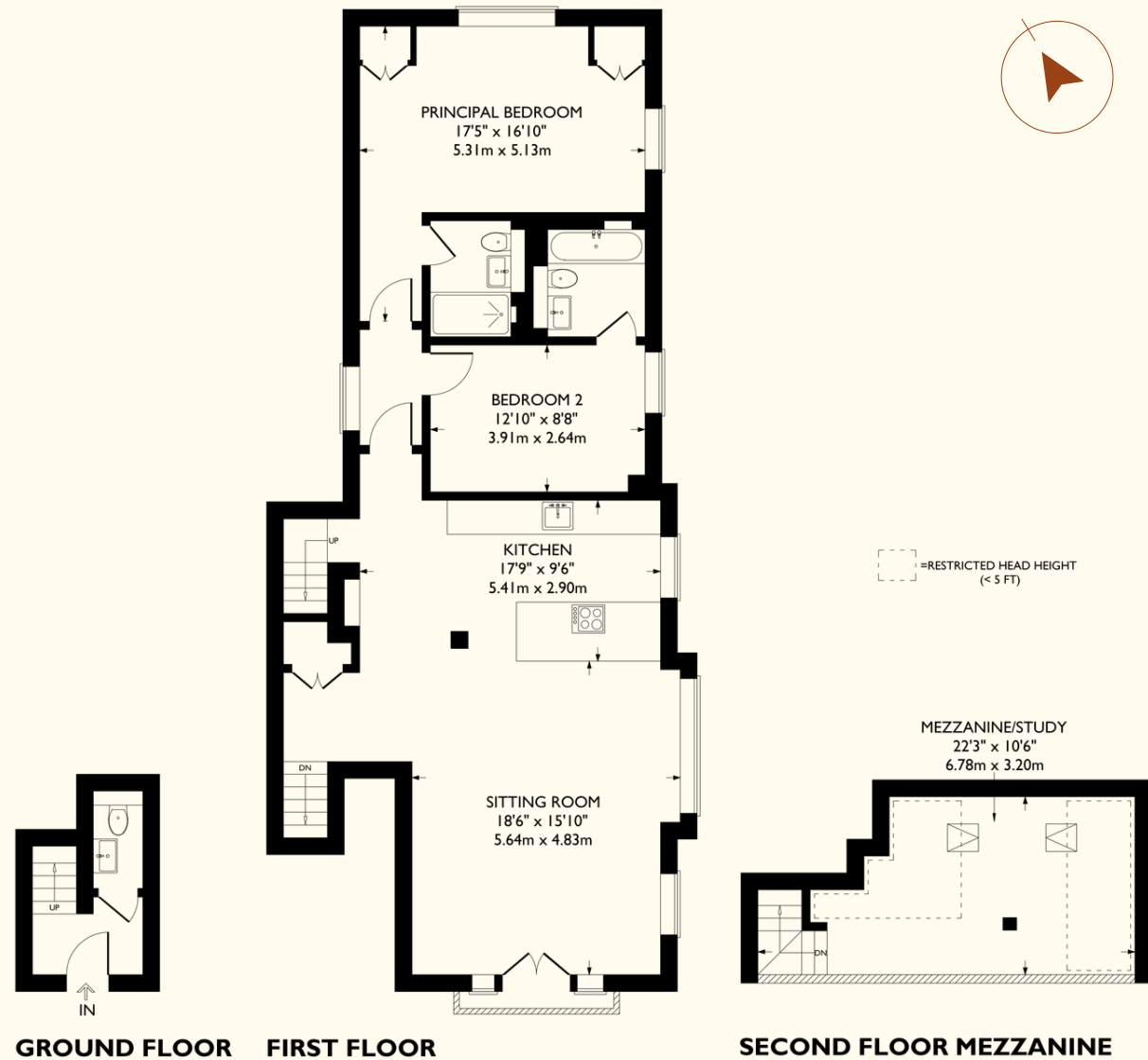


4 Rosewell Mews

Approximate Gross Internal Area
1,269 sq ft / 118 sq m



© Nash Partnership

This plan is for layout guidance only. Drawn in accordance with RICS guidelines. Not drawn to scale unless stated. Windows & door openings are approximate. Whilst every care is taken in the preparation of this plan, please check all dimensions, shapes & compass bearings before making any decisions reliant upon them.