

# The Lettings Office

at NASH

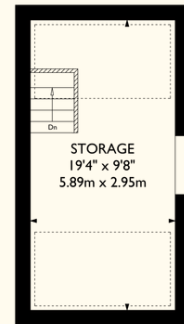
## 4 Stocks Farm Barns

Aldbury

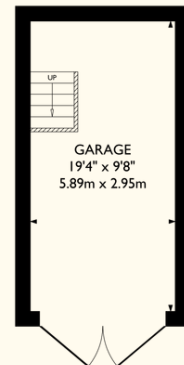
Approximate Gross Internal Area  
1,668 sq ft / 155 sq m

Garage  
374 sq ft / 35 sq m

Total  
2,042 sq ft / 190 sq m

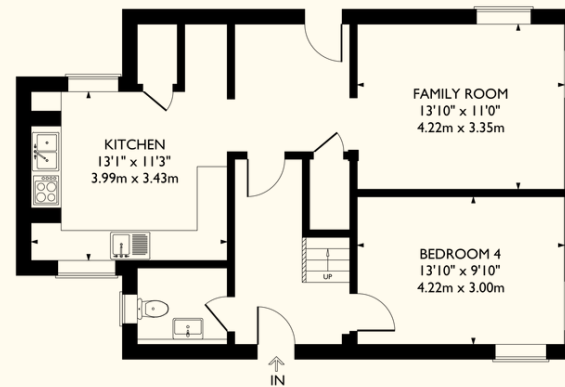


**GARAGE  
FIRST FLOOR**

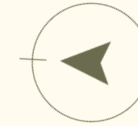


**GARAGE  
GROUND FLOOR**

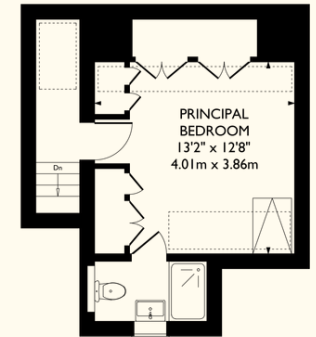
(NOT SHOWN IN ACTUAL  
LOCATION/ORIENTATION)



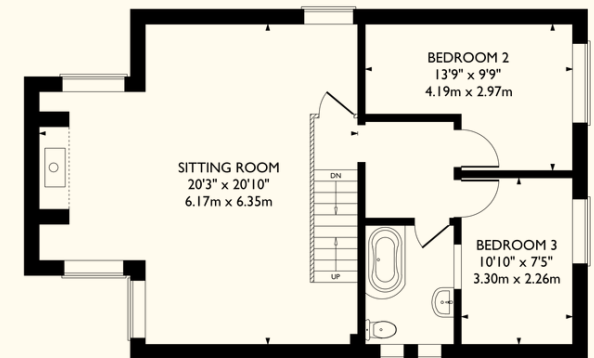
**GROUND FLOOR**



RESTRICTED HEAD HEIGHT  
(< 5 FT)



**SECOND FLOOR**



**FIRST FLOOR**

© Nash Partnership

This plan is for layout guidance only. Drawn in accordance with RICS guidelines. Not drawn to scale unless stated. Windows & door openings are approximate. Whilst every care is taken in the preparation of this plan, please check all dimensions, shapes & compass bearings before making any decisions reliant upon them.